

Ladies
of the
Prairies



HEREFORD SALE

OCTOBER 10, 2021
SC ONLINE SALES

Ladies of the Prairies

HEREFORD SALE

OCT.10 2021

SALE DAY PHONES...

Kurtis Reid	306-280-6858
David Reid	306-221-7039
Kari Rae Manchester	306-893-8148
Darren Manchester	306-228-7462
Matt Hordos	306-812-9233
Carissa Hordos	306-812-9136

CATALOGUE DESIGNED BY...

Today's Publishing
Warman, SK 306-933-4200

VIEW CATALOGUE ONLINE...

www.BuyAgro.com

BID ONLINE AT...



If you have issues bidding
or registering please
immediatly contact:
Dave Stolz 402-709-7412



OPEN HOUSE & CATTLE VIEWING OCTOBER 9TH, 1PM TO DARK.

AT THE FARM, HEPBURN, SK. FOLLOW SIGNS.

Terms and Conditions

Each animal becomes the purchaser's risk immediately after the animal is sold. All animals in this sale will be sold under the terms and guarantees set forth by the Canadian Hereford Association with regard to health, freedom from defects and from both reproductive and specific genetic soundness.

TRUCKING:

Trucking or transport of animals is the purchaser's responsibility.

INSURANCE:

We recommend purchasing insurance following the closing of the sale.

ATTENDING THE SALE:

All farm visitors enter premises at own risk.

The consignors reserve the right to one succesful flush on all females in the sale, with a gaurantee of six (6) Grade A embryos at the buyer's convenience and seller's expense.



Click here for video

1

TCF JVJ 155E *Peggy* 109J

Female PC03082365
THR 109J Jan. 8/21

SHF CANNON Z210 C95
 GHC C5 ATTENTION 155E (DLF HYF IEF MSUDF)
 GHC C5 MISS DUCHESS 58C (DLF HYF IEF MSUDF)
 TH 122 711 VICTOR 719T (DLF HYF IEF MDF)
 JVJ DANCETTE 719T 4D
 JVJ 18L BUTTERCUP 8A

EPDS	
BW	2.6
WW	55.5
YW	83.9
MILK	26.5
TM	54.3

Dark red and goggle eyed, 109J is a female that combines substance, body and femininity. She's an immediate eye catcher. This cow family is layered with beautiful uddered, power cows that don't disappoint. Being a good looking, bold ribbed heifer with the right muscle shape and a sweet hind leg leads us to believe she will be successful whichever path her new owner takes with her.

Consigned by: The Cliffs Farms



Attention 155E- Sire



Dam of Lot 1



Click here for video

2

TCF 155E *Eyes On Me* 120J

Female
THR 120J

PC03082373
Jan. 27/21

SHF CANNON Z210 C95
 GHC C5 ATTENTION 155E (DLF HYF IEF MSUDF)
 GHC C5 MISS DUCHESS 58C (DLF HYF IEF MSUDF)
 TCF JVJ 11X THE GOODS 305A (DLF HYF IEF MSUDF)
 TCF 305A GOOD LUCK GIRL 709E
 GHC MISS DEANNE 63U (DLF HYF IEF MSUDF)

EPDS

BW	4.5
WW	56.0
YW	91.3
MILK	24.0
TM	52.0

A favorite, how could she not be? David is not a fan of selling her. We are all in on females that have the build, power and muscle to make cows. When they are nice skulled, good fronted and will balance up incredibly well on a halter, that's the goal. The 63U cow family that backs her pedigree is just no miss, only the second female we've ever sold off the cow family. We'll be showing a full sib by blood bull calf this fall.

Consigned by: The Cliffs Farms



Dam of Lot 2



Attention 155E-Sire



TCF JVJ 155E *Halo* 104J

Female
THR 104J

PC03082361
Jan. 1/21

SHF CANNON Z210 C95
 GHC C5 ATTENTION 155E (DLF HYF IEF MSUDF)
 GHC C5 MISS DUCHESS 58C (DLF HYF IEF MSUDF)
 CRR ABOUT TIME 743 (DLF HYF IEF MDF)
 JVJ 743 ANGEL 4C
 ELM-LODGE ZIPPITY 33Z

EPDS

BW	0.0
WW	44.7
YW	70.4
MILK	23.8
TM	46.2

Since we've had the amazing opportunity to take on the JVJ herd, her dam 4C has not missed putting a heifer in the sale or a bull in the top cut. Halo we think follows along that path. From the side she's a female that has the depth and boldness of rib to really balance with that right kind of muscle and structural integrity.

Consigned by: The Cliffs Farms



Attention 155E- Sire



4

TCF C 75D *Alegra* 115J {DLF HYF IEF MSUDF}Female PC03082368
CTHR 115J Jan. 17/21

ANL C HAR T100 TAHOE 86 ET 23B {DLF HYF IEF MSUDF MDF}
 GHC VISA 75D {DLF HYF IEF MSUDF}
 HAROLDSONS JVJ SARAH 521X 14Z {DLF HYF IEF MSUDF}
 MCCOY 30N APPLAUSE ET 99W {DLF HYF IEF MSUDF}
 TWIN-VIEW 99W ALERGRA 92Z
 TWIN-VIEW 6L ISABELLA 112W

EPDS

BW	2.9
WW	53.4
YW	90.1
MILK	22.8
TM	49.5

The final Visa 75D heifer calf we will sell. Visa daughters are key contributors at TCF, he is one of the most consistent bulls we have ever used. Alegra just has that cowy look. She's hard to pick a hole in with her length of body, a shot of extra muscle and as well built in her skeleton as any. We will calve her full sister in 2022 and they are peas in a pod giving us the confidence to offer Alegra to represent our herd in yours.
 Consigned by: The Cliffs Farms



Visa 75D- Sire



Click here for video

5

TCF JVJ 704E *Boom Gal* 2H

Female
THR 2H

PC03070364
Jan. 1/20

- LOEWEN GHC 33T AXIOM B52 ET
- TCF B52 SONIC BOOM 704E (DLF HYF IEF MSUDF)
- TCF 3S SHE KNOWS IT 402B
- GHC VISA 75D (DLF HYF IEF MSUDF)
- TCF JVJ VISAS GAL 827F
- JVJ 18L MISS BOOMER 9Y (DLF HYF IEF MSUDF)

EPDS

BW	1.9
WW	51.0
YW	88.5
MILK	23.5
TM	49.0

We kept back this female to make her into a really solid bred heifer and she has not disappointed. Top and bottom side of her pedigree are cow families that have made lasting impression in our herd. Moderate in her skeleton but she packs a punch while still being that easy feeding kind.

Bred to GHC C5 Attention 155E, observed bred March 29, 2021

Consigned by: The Cliffs Farms



Sonic Boom 704E- Sire



Attention 155E- Service Sire



Click here for video

6

TCF JVJ 75D *Bailey* 14HFemale
THR 14HPC03077798
Jan. 16/20

ANL C HAR T100 TAHOE 86 ET 23B (DLF HYF IEF MSUDF MDF)
GHC VISA 75D (DLF HYF IEF MSUDF)
 HAROLDSONS JVJ SARAH 521X 14Z (DLF HYF IEF MSUDF)
 TH 75J 243R BAILOUT 144U ET (DLF HYF IEF)
J ELM-LODGE ZIPPITY 33Z
 DJF 3N 049 WILDFLOWER 929 ET

EPDS

BW	4.4
WW	57.5
YW	100.6
MILK	24.5
TM	53.3

After calving out Visa daughters and having two maternal sisters in our herd, confidence in this one is high. 14H the honest broody type female that is great in her lines, has the stoutness and performance to work. Backed by cow families because cow families build consistency.

Bred to TCF B52 Sonic Boom 704E, observed bred April 12, 2021

Consigned by: The Cliffs Farms



Visa 75D- Sire



Sonic Boom 704E - Service Sire



7

MANCHESTER 106A Peaches 129J

Female
MAN 129J

PC03085444
Jan. 23/21

TH 122 711 VICTOR 521X ET (DLF HYF IEF)
 MHPH 521X ACTION 106A (DLF HYF IEF MSUDF)
 MHPH 301W DAINTY 205Y (DLF HYF IEF MSUDF MDF)
 CHURCHILL STUD 3134A
 MANCHESTER 3134A PEACHES 803F
 JJPH 127Y 422P PEACHES 627D

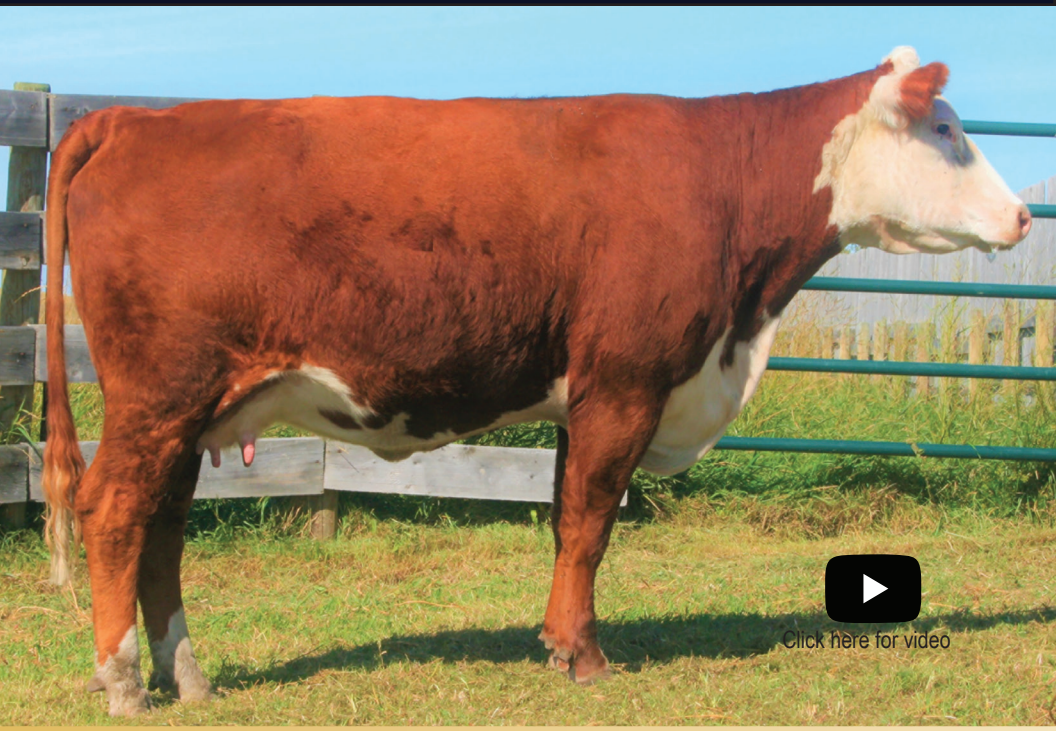
EPDS

BW	5.2
WW	66.6
YW	104.7
MILK	26.2
TM	59.5

Consigned by: Manchester Polled Herefords



Action 106A- Sire of Lot 8A



Click here for video

8

MANCHESTER 3134A Peaches 803F

Female
MAN 803F

PC03053125
Jan. 5/18

KJ HVH 33N REDEEM 485T ET (DLF HYF IEF)
CHURCHILL STUD 3134A
 CHURCHILL LADY 002X ET
 JJPH 83T BENCHMARK 127Y (DLF HYF IEF)
JJPH 127Y 422P PEACHES 627D
 JJPH 910J 103 PEACHES 422P

EPDS

BW	3.9
WW	55.9
YW	91.2
MILK	26.2
TM	54.2

This is a neat package deal! MAN 803F is unique in her genetic makeup and has already proven herself to be highly productive. We retained her 2020 heifer and she is one of our absolute favourites in our bred heifer pen this year. Her MHPH 521X Action 106A heifer calf at her side speaks for herself! A well balanced female with power and eye appeal. The MHPH 521X Action 106A daughters in our herd all have exceptional udders and are super consistent, productive females. 803F is AI bred to WORR OWEN Tankeray Y79D, a sire we have used extensively in our AI program, and we are so pleased with how much extra "pop" and eye appeal all of his calves have. This should prove to be a very interesting mating!

AI bred to: WORR OWEN Tankeray Y79D April 6, 2021. Pasture exposed to: JDL Hellboy Y79D 118H. April 19 to June 17, 2021

Consigned by: Manchester Polled Herefords



8

Stud 3134A- Sire of Lot 8



Tankeray Y79D- Serice Sire of Lot 8



Click here for video

9

MANCHESTER 42E *Pin Up* 51H

Female
MAN 51H

PC03078366
Feb. 29/20

REMITALL-W 50 SHADES ET 12C (DLF HYF IEF MSUDF)
 HF 12C 50 SHADES FREEDOM 42E (DLF HYF IEF MSUDF)
 HF 29W UNIQUE LADY 18Z
 MHPH 521X ACTION 106A (DLF HYF IEF MSUDF)
 JJPH 106A 136Y PIN UP 607D
 JJPH 754T 83T PIN UP 136Y

EPDS

BW	3.8
WW	62.0
YW	98.1
MILK	24.3
TM	55.3

A very eye appealing package with exceptional volume and a feminine front end. Our "Pin Up" cow family never seems to disappoint us and 51H is a true example to this predictable cow family. She is correct in her conformation with an attractive set of EPD's.

AI ed to Churchill Majestic 903G ET April 16, 2021. Safe to AI date

Consigned by: Manchester Polled Herefords



Majestic 903G - Service Sire



10

TORCH VIEW *Ember* 113JFemale PC03085445
TVCC 113J Mar. 11/21

CHAC MASON 2214
 SHOWTIME FIREBALL 734 ET
 HH ON PEARL 619D ET
 MLL 7122 REPLAY 338X (DLF HYF IEF)
 MLL 338X WATERLOU ET 302C (DLF HYF IEF)
 GH ADAMS 7101 WATERLOU 320W (DLF HYF IEF)

EPDS

BW	6.3
WW	57.5
YW	94.3
MILK	22.8
TM	51.6

This is a female that we feel will develop into an excellent show heifer; she has a ton of potential! Hair, style, that rocket front third, and added pigment that never hurts. She also possesses a lot of maternal in her pedigree, with the likes of Pearl, Online, Tessa and Tanya cow families. Her dam is one of the nicest uddered, biggest bodied cows you will find. Once you're done showing her, she will make a highly productive, beautiful uddered cow like her mother.

Consigned by: Torch View Cattle Co.



Fireball 734ET- Sire



TORCH VIEW *Lady Frontier* 123J

Female PC03085044
TVCC 123J Mar. 16/21

TH 403A 475Z PIONEER 358C ET
 TH FRONTIER 174E (MDF)
 FTF TRUSTING LADY 312A
 HAROLDSON'S LINER 521X 12Z (DLF HYF IEF)
 HMS HI-CLIFFE 12Z DANTY 37D
 HAROLDSON'S JANE 15W 37B

EPDS	
BW	2.0
WW	66.4
YW	110.9
MILK	28.0
TM	61.2

One of the few Frontier daughters we had this year. We are very high on the Frontier sire group in terms of added muscle shape, pigment and a very soft maternal look to his females. A female that will be extremely flexible to breed with her low birth and high growth numbers.

Consigned by: Torch View Cattle Co.



Frontier- Sire



[Click here for video](#)

12

HMS HI-CLIFFE 12Z *Danty* 37D

Female
HMS 37D

PC03021728
Apr. 7/16

- TH 122 711 VICTOR 521X ET (DLF HYF IEF)
- HAROLDSON'S LINER 521X 12Z (DLF HYF IEF)
- TL 5073 JESSICA 751U (DLF HYF IEF)
- HAROLDSON'S WLC RENO ET 15W (DLF HYF IEF)
- HAROLDSON'S JANE 15W 37B
- HAROLDSONS JANE T100 91Z

EPDS

BW	1.8
WW	55.4
YW	89.1
MILK	26.0
TM	53.7

Here is a female that exemplifies what we hold to high importance in our herd- sound, good footed, low maintenance with an excellent udder that will stand the test of time. The pigment she has and passes onto her progeny is an added bonus. We love her Grand Slam bred she has left us, and her Frontier daughter selling at her side will be every bit as good. She carries an exciting service to Empower, which has left us absolutely amazed at this past year's calf crop.

Exposed to HARVIE OVHF EMPOWER 5F ET from April 7 to July 7, 2021

Consigned by: Torch View Cattle Co.



Empower 5F- Service Sire



Offering Right to Flush

14

HARVIE Ms Unlimited 132B

Female PC02992436
CVIH 132B Feb. 21/14

KAIRURU ABERDEEN 03 0047
HARVIE DAN T-BONE 196T (DLF HYF IEF MSUDF MDF)
 HARVIE MS FIREFLY 65P (DLF HYF IEF)
 HB STAR BATTLE GROUND 2013 (DLF HYF IEF)
RVP 2013 UNLIMITED 14U
 BAR-J-M LA SENZA 14S (DLF HYF IEF)

EPDS	
BW	5.8
WW	60.2
YW	102.8
MILK	31.6
TM	61.7

We are proud to offer one flush on Ms. Unlimited. We selected her as our choice from the Harvie dispersal for her true cow power, explosive dimension, impeccable structure and maternal ability. She has a proven track record on her natural calves; a quality that we look for in a foundation donor female. She has done extremely well for Harvie's, and us. She raised us a beautiful United daughter this year. You won't find a cow that breeds any truer and more consistent than Ms. Unlimited. She is open and ready to flush, and has a good flush track record.

TERMS: Seller guarantees six (6) grade 1 embryos to the bull of the buyers choice. Any embryos below six (6) will be prorated back to the buyer. Any embryos above six (6) will be split 50/50 between buyer and the seller. Buyer incurs the cost of flush and semen expenses. Flush will be done by a certified embryo technician, and will occur at a certified embryo facility.

Consigned by: Torch View Cattle Co

CREATED BY

Today's
Publishing